



E & J

Group of companies

We Build Your Dream With Passion

Nothing is as important as passion.
Only passion, great passion can
elevate everything to a greater
spectrum.



Let's Build Your Dream Together

All our dreams can come true, if we have the courage to pursue them. We always believe that we can help others to make these dreams possible through hard work and sincerity that we undertake in our work. We specialize in Civil Engineering and Building Contracting because we prefer to be detailed with every aspect of the project – the foundation, structural design, exterior and interior. Finally, we are honoured to say that our humble company have been privileged to be involved with many well-known and highly successful projects.



“Excellence is never an accident. It is always the result of high intention, sincere effort and intelligent execution; it represents the wise choice of many alternatives - choice, not chances, determines your destiny.”



We Build Your Dream With Passion

E&J Group of Companies has been established in the year 1998 and has always aimed for excellence in every aspect of our operation. We have always embodied a teaching from the famous Greek Philosopher, Aristotle.

Pembinaan Infra E&J Sdn Bhd and Ecobuilt (M) Sdn Bhd, both register with construction Industrial Development Board (CIDB) as G7 Construction Company. Both the company principally activities and interest encompass building construction, civil engineering and infrastructure work. To date, both companies have successfully completed projects value more than RM800 Million.

Our Primary Activities & Expertise:

- **CIVIL & BUILDING CONSTRUCTION**
- **PROPERTY DEVELOPMENT**
- **INFRASTRUCTURE WORKS**
- **PLANT & MACHINERY**

Our Pillars

With great powers comes, great responsibility. An old cliché, but true for us. With greater upcoming projects and constant pursuit of success, we are supported by pillars of strength that form the structure of the company that constantly aims to develop the company to greater heights.

Datuk Michael Ong Chee Koen

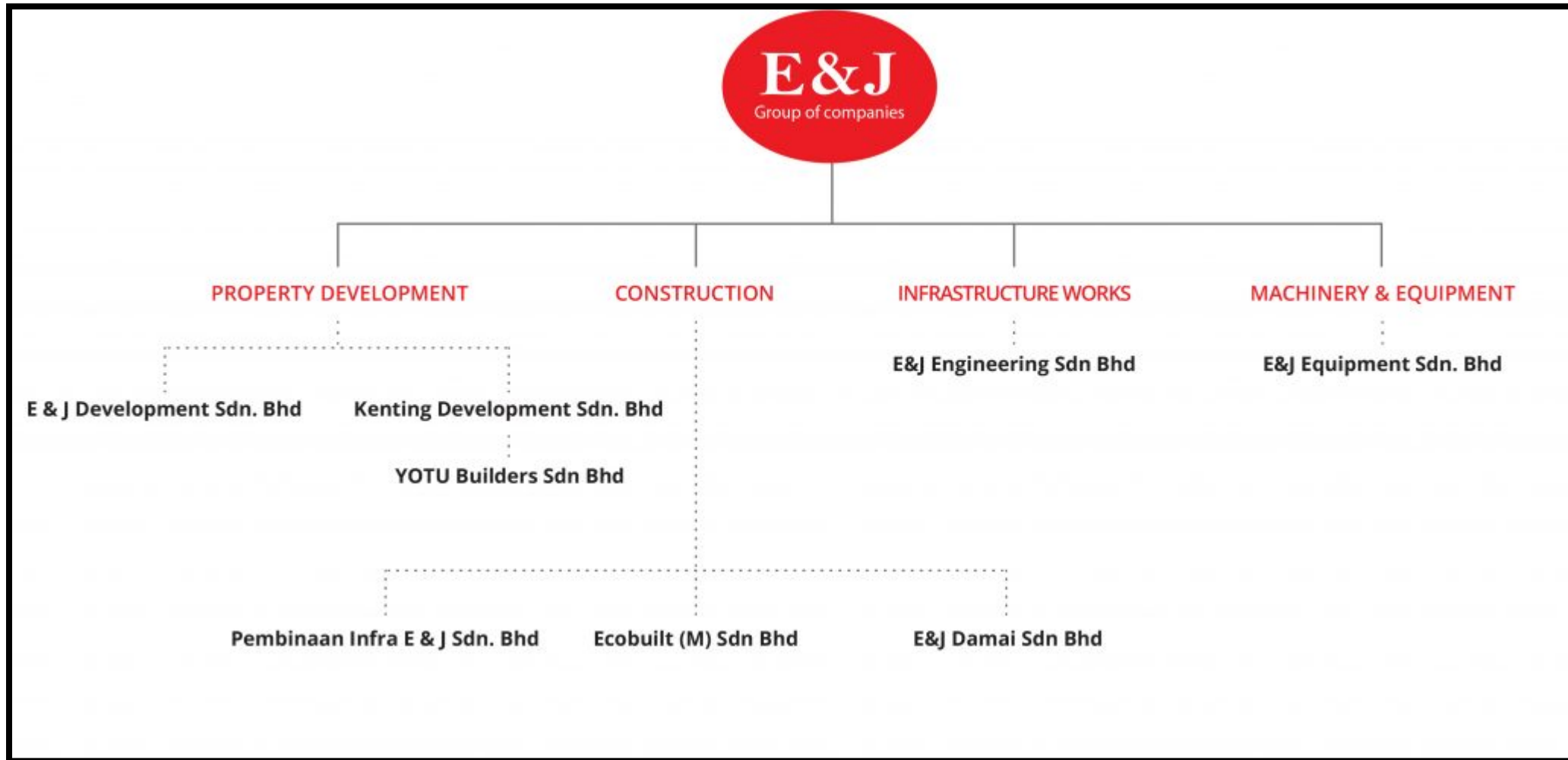
Founder & Chief Executive Officer



Ir. Yap Nam Fee

Co-Founder & Managing Director

The Group Structure



Our Achievements

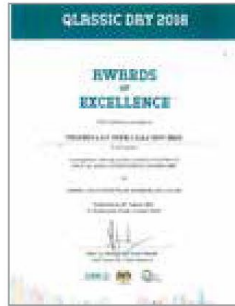
As a dynamic and progressive group, E&J Group of companies is committed to upholding the highest level of reliability, creativity, as well as quality in its services and products delivered. These are best reflected by the accolades and awards bestowed to the Group over the years, in recognition of its commitment and relentless effort in meeting the needs and demands of clients and continuity in striving for excellence.



PEMBAINAAN INFRA E&J SDN BHD
ISO9001:2015 GIC CERTIFICATE 2020



SCORE CERTIFICATE OF
ACHIEVEMENT 2019



HIGH CLASSIC ACHIEVEMENT
AWARDS 2018



HIGH CLASSIC ACHIEVEMENT
AWARDS 2017



ECOBUILT (M) SDN BHD
WATER SERVICES CERTIFICATE



PEMBAINAAN INFRA E&J SDN BHD
CIDB CERTIFICATE



ECOBUILT (M) SDN BHD
CIDB CERTIFICATE



CLASSIC CERTIFICATE 2017



CLASSIC CERTIFICATE 2016



CLASSIC CERTIFICATE 2016



PEMBAINAAN INFRA E&J SDN BHD
WATER SERVICES CERTIFICATE

Completed Projects



Calvary Construction Center Bukit Jalil, Kuala Lumpur

The Calvary Convention Center's 600,000 sq ft developed region is flexible enough to have any sort of occasion; with premises extending from a 5,000 pax assembly hall to 50 pax gathering rooms. Effectively open by means of a system of thruways and strategically placed, the CCC is the spot for your next occasion. Utilizing the CCC's cutting edge premises as a scene for facilitating your occasion will surpass both you and your customer's desires.



Completed Projects



Aster Residence Cheras, Kuala Lumpur

Aster Residence is a medium-cost, freehold serviced apartment, located in the heart of Cheras.

The property is 38 storeys high and having a total of 960 units with ranges between 650 sq ft and 1009 sq ft.

Aster Residence Cheras offers some outstanding facilities and features to its residents. Other than its strategic location, the area is surrounded with plenty of amenities. The residents do not have to worry about anything in the area because everything is easily available in the locality.

The property is going to boom in the future, making it ideal from an investment perspective.

Completed Projects



Puncak Indah Ampang, Selangor

Puncak Indah @ Ampang has a land area of about 30 acres with 1,096 housing units.

It is strategically located about 8 km East of Kuala Lumpur City Centre with direct access via Jalan Ampang/Jalan Bukit Belacan, Ampang-Kuala Lumpur Elevated Highway (AKLEH), Duta-Ulu Klang Expressway (DUKE) and Besraya Eastern Extension Expressway.

Completed Projects



The Annex Medan Connaught, Kuala Lumpur

The Annex is an ongoing service apartment built on a 4.6-acre piece of freehold land in Cheras, Kuala Lumpur.

The property is Phase 1B of Medan Connaught, a mixed development, and its developer is Accolade Land Sdn Bhd.

The Annex comprises 258 residence units with built-ups ranging from 958 square feet to 1,771 square feet to cater for different wants and needs of interested owners.

Completed Projects



O'Hako Residence **Puchong, Selangor**

O'Hako, Puchong Jaya is a 2-tower, medium-cost, freehold serviced apartment, located in the heart of Puchong.

The property is 31 storeys high for each tower and having a total of 718 units with 12 units per floor.

O'Hako apartment is standing in the heart of the matured Puchong township in which it can benefit its residents with convenient access to all amenities in the surrounding area. Besides that, it also has excellent accessibility and connectivity in terms of road and LRT transports.

Completed Projects



Residensi Rampai II **Sri Rampai, Selangor**

Residensi Rampai II is a leasehold project of CSRC, a low-density property with about 300 units spread across over 30 floors. This property offers homes of different sizes to a wide range of home seekers including families.

With a focus on providing modern homes, the modern facilities incorporated into the property is a major part of its appeal. These modern facilities include a gymnasium room, a swimming pool and two parking bays per unit.

Casa Green

Bukit Jalil, Kuala Lumpur

Casa Green is another estate arranged in the forthcoming township of Bukit Jalil south of the city. Casa Green is an advancement of reasonable homes under the Federal Territories Affordable Housing and Rumah WIP extends and is focused towards those of the lower level of pay who wish to live inside the city yet can't bear the cost of the galactic costs.



Casa Green

Cheras, Kuala Lumpur

Casa Green @ Cheras is the highest development in the township of Taman Sri Minang in Cheras. Sitting on 5.4 acres of land, a freehold condominium development soaring through the sky providing an uninterrupted panoramic view of the surrounding hills where the two 22-storey blocks with a total of 326 units for each tower and laid out in semi-detached style with built up ranges from 1,765 sq.ft. to 3,380 sq.ft.

Shamelin Star

Cheras, Kuala Lumpur

Shamelin Star is the most environmentally friendly high-rise development located in Cheras as of 2015, being Green Building Index (GBI) certified. The development is a testament of a five-star lifestyle within a fine example of sustainable building.





PARc Tower

Taman Sri Rampai, Kuala Lumpur

The contemporary skyscraper living of The Parc Tower's modern homes was intended to give you a definitive living and venture passage. Made for families and experts alike, the transcending living arrangements neglects Kuala Lumpur's best perspectives.



Wisma PJ5 Soho

Petaling Jaya, Selangor

Wisma PJ5 Soho is a freehold office suite situated in the heart of Kelana Jaya. PJ5 Soho is a mixed development that encompass the business and residence's perspective of essential for both investors and owners. With a tranquil and serene ecosystem provided in the area, it makes a good resting places for the residents after a long day of hustle and bustle.



The Octagon

Ipoh, Perak

The Octagon is a proud project of the property developer, One Octagon. Developed in the historical site of Yau Tet Shin Bazaar, The Octagon is expected to be the next landmark replacing the bazaar. There are also an cultural mall included in this residence, which comes with several retail outlets.



Acappella Residence - Shah Alam, Selangor

Acappella Residences @ Shah Alam is a luxury condominium located Seksyen 13, Shah Alam of Selangor. Located in the mature township of Shah Alam, Acappella Residences is known as the hub for commercial activities.



Embun Kemensah - Ampang, Kuala Lumpur

Imagine the pleasure of being gently awakened by the melodious sounds of nature and fresh crisp mountain air, as the glorious sun rises amid tranquil greenery still bathed in glistening dewdrops. Nature-made joys. Now made even better with artist-made luxuries. A collaboration that inspires. Ideally located in the heart of Selangor state, in Kemensah, the elite Embun enclave of 3-storey semi-Ds and 4 storey courtyard villas is surrounded by the pristine tranquillity of a rainforest, complete with cascading creeks and waterfalls.



SGL Factory Banting, Selangor

A revolutionary, fully integrated graphite electrode and cathode plant built in Banting Selangor to help SGL Group to expand its Asia Pacific market. For SGL, this facility sets a new production benchmark in terms of processes and technology for the industry. This facility was built as a hub for graphite electrodes and cathodes to supply to local customers from this facility.





Semi-D Factory

Klang, Selangor

Together with Minho Bhd, E&J develop and constructed 27 units of semi-d factory at Kapar Industrial area.

Putra Industrial Park

Puchong, Selangor

An urban detached factory with 1 ½ storey office with a build-up of 22,800 square feet, built for convenience and efficiency for manufacturers and storage usage. The factory also comes with a metal sliding shutters for easy handling and a column free floor that provides superior flexibility, functionality and maximum factory usage space.





Bunus STP Plant Titiwangsa, Selangor

Construction services provider Bina Puri Holdings Bhd has secured an RM291.16mil project from the Government to build a sewage treatment plant in Titiwangsa, Kuala Lumpur. The project, to be completed in 18 months, entails the construction, equipping, testing and commissioning of the Bunus regional sewage treatment plant, including the maintenance of the project for 12 months.

AND A FEW OTHER COMPLETED PROJECTS

- Telok Panglima Garang @ Banting, Selangor
- Klang Sentral @ Klang, Selangor
- Zen Resident @ Puchong, Selangor
- Wisma Fatimah @ Brickfields, Selangor
- Kuala Sungai Lempit @ Banting, Selangor
- Desa Seri Setia @ Salak Tinggi, Selangor
- Taman Bentara @ Jalan Puyuh, Selangor
- Taman Sri Bahagia @ Teluk Intan, Perak

Ongoing Projects



Mahogany Residences **Kota Damansara, Petaling Jaya**

Mahogany Residences @ Kota Damansara is the epitome of modern architecture intertwined with mother nature, greeting every sunrise and sunset with its magnificent array of charm.

Discover 7 unique rainforest trails and spectacular panoramic views to quiet streamside paths and stunning waterfalls, you're always close to a great walk.

Low density residential, only 281 units with every unit comes with balcony and 2-3 Car Parks. Equipped lifestyle facilities and 4 Tiers security, GreenRE Certified Development.

Practical unit sizes from 905 sf to 1,623 facing North & South. Seamless connectivity with 4 MRT stations within 4km and well connected to major highways.

Ongoing Projects

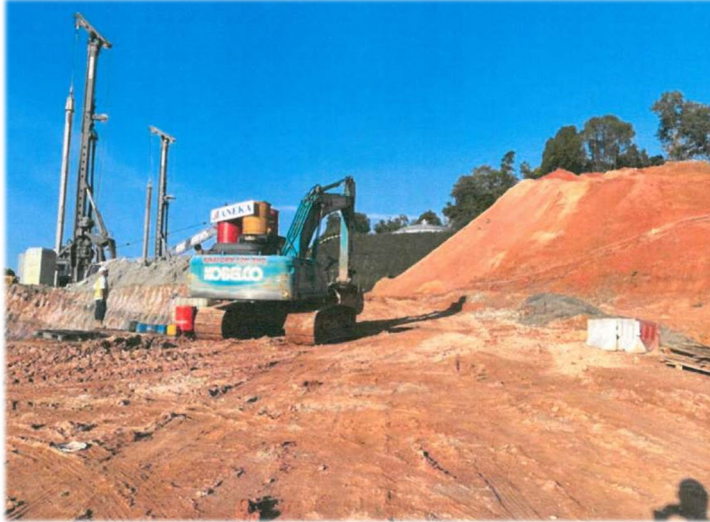


Minest Residence Sentul, Kuala Lumpur

MiNest Residence is located in Sentul, and it is developed by MiNest Development. The 43-storey freehold development is sited across 5.5 acres, with a total of 1,368 units.

The units have been marketed as “breathable homes with a view” and designed to feature ample windows for better ventilation. Said view refers to Kuala Lumpur city centre (KLCC), as it is about 6km from KLCC.

Ongoing Projects



Serina Residences **Sri Petaling, Kuala Lumpur**

Serina Residences is a one block of 44 floors with 661 units RumaWip, consisting of 7 floors of car park, 35 floors of typical units, 1 floor of facilities and a sub-basement car park.

Serina Residences offers residents a truly connected way of life with its strategic location. Conveniently situated along the MRT Putrajaya Line (MRT2), Sri Petaling Residence is a Transit-Oriented Development (TOD) which provides alternative means of transport in and out of Sri Petaling.



**“E&J is here to
Build Your Dream**

Having a vision without action is merely a dream. But with the right people and action, it can certainly become a reality. ”

Datuk Michael Ong Chee Koen, Founder of E&J Group

**Let's Build
Your Dream Together.**